

H



JAY R. SMITH MFG. CO.
 MEMBER OF MORRIS GROUP INTERNATIONAL
 POST OFFICE BOX 3237
 MONTGOMERY, ALABAMA 36109-0237 (USA)
 TEL: 334-277-8520 FAX: 334-272-7396 www.jrsmith.com



LOCATION

DRAWING NUMBER
S1330

SIZE
A

SCALE:
NONE

DATE:
5-24-85

APPROVED BY:
TD

CHECKED BY:
TD

DRAWN BY:
TD

1330, 1340

WE CAN ASSUME NO RESPONSIBILITY FOR USE OF SUPERSEDED OR VOID DATA

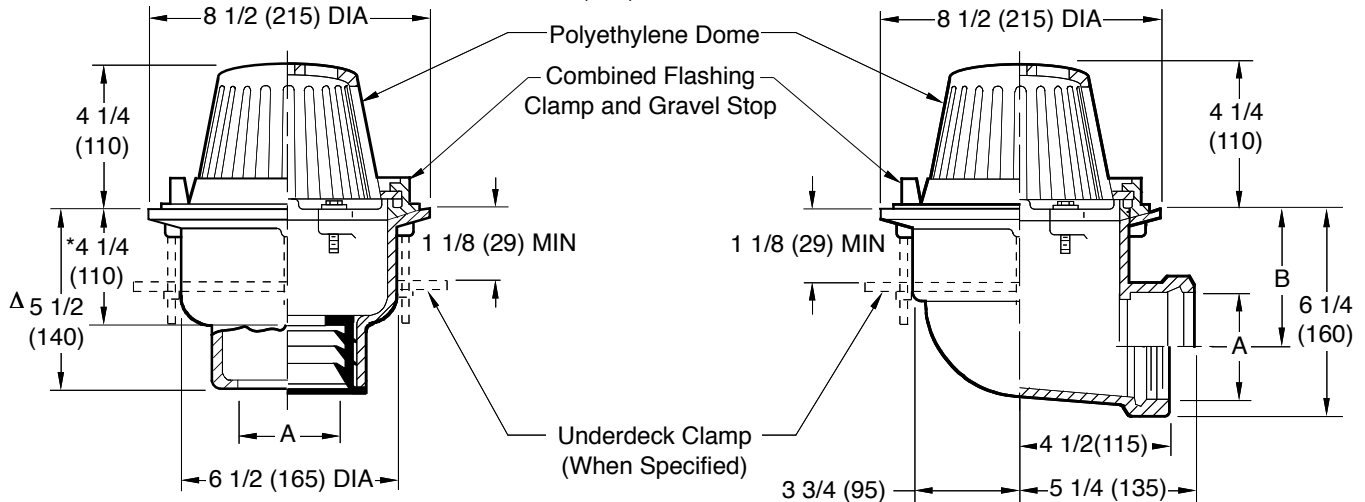
DIMENSIONS ARE SUBJECT TO MANUFACTURERS TOLERANCE AND CHANGE WITHOUT NOTICE

GENERAL PURPOSE ROOF DRAINS

8 1/2" (215) DIAMETER - LOW PROFILE DOME

FUNCTION: Used in flat roofs, gutters or valleys of any construction. Small diameter pan is particularly adaptable to gutters and valleys where limited space is available. Flashing clamp holds flashing and roofing materials without puncturing. Low profile dome provides sufficient free area for quick drainage of rain water and protects the drain sump and connected piping from the intrusion of debris.

Free Area
 41.5 SQ IN
 (268) SQ CM



- Fig. 1330C CAULK OUTLET
- Fig. 1330Y NO-HUB OUTLET

- Fig. 1340C CAULK OUTLET
- Fig. 1340T THREADED OUTLET

A (Pipe Size) = 02(50), 03(75) or 04(100)

recommended deck opening

with suffix -R	9(230) DIA
less suffix -R	7 3/4(195) DIA

*This Dimension to Internal

Stop of Speedi-Set Gasket.
 Δ Same for Caulk, NO-HUB and Speedi-Set, 4 1/4(110) for Threaded.

A SIZE	02 (50)	03 (75)	04 (100)
B	4 1/2 (115)	4 (100)	3 1/2 (89)

REGULARLY FURNISHED:

Duco Cast Iron Body with Combined Flashing Clamp and Gravel Stop with Polyethylene Dome.

VARIATIONS:

- Expansion Joint (Specify Fig. 1710) (Fig. 1330 only)
- Extension -E (Specify Height)
- 2"(51) High Water Dam -WD
- "L" Shaped Underdeck Clamp -CL
- L Speedi-Set Service Weight (Fig. 1330 only)
- LXH Speedi-Set Extra Heavy (Fig. 1330 only)
- NO-HUB Adaptor (Specify Fig. 2646Y) (Fig. 1340 only)
- Secondary Flashing Clamp -C2
- Sump Receiver -R
- Underdeck Clamp -C
- Vandal Proof Dome -U
- T Threaded Outlet

OPTIONAL MATERIALS:

- Aluminum Dome -AD
- Cast Iron Dome -CID
- Galvanized Cast Iron Body & Collar -G
- Galvanized Cast Iron Dome -CIDG
- Rough Bronze Dome -RBD

NOTE: Stated flow rates for roof drains are based on particular test piping configurations and dimensions. Installed roof drain flow rates cannot be stated unless the attached piping configuration is known and the effects of the drainage calculated.

NOTE: Dimensions shown in parentheses are in millimeters.

REV.	DATE	DESCRIPTION	BY	CKD. BY	WEIGHT POUNDS	VOLUME CUBIC FEET	FIGURE NUMBER
H	11-13-15	Added Flow Rate Note	TBW	BW			1330, 1340
G	11-1-02	Rev. "V" Notch	RN	BS			
F	5-26-99	Rev. Opt. Mat.	CMD	BS			
E	4-7-97	Added Millimeters	EMB	BS			