

**stern**  
STERN ENGINEERING LTD.

15 GAN RAVE Blvd.

81222 GAN RAVE

YAVNE, ISRAEL

TEL: 972-8-9326000

FAX: 972-8-9326025

E - M A I L :

EXPORT@STERNFAUCETS.COM

WWW.STERNFAUCETS.COM



**EASY SERIES**  
ELECTRONIC LAVATORY FAUCETS

INSTALLATION & MAINTENANCE GUIDE

E A S Y B



E A S Y E



01.2010

STERN ENGINEERING LTD.

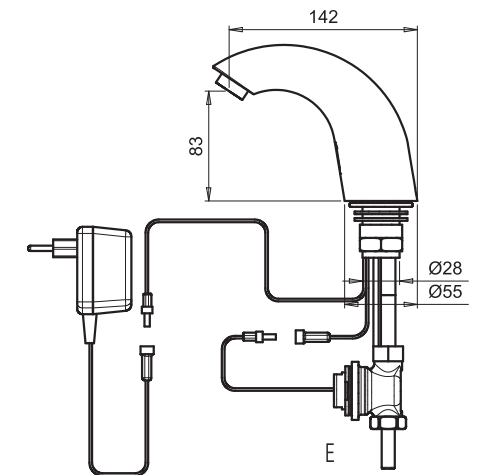
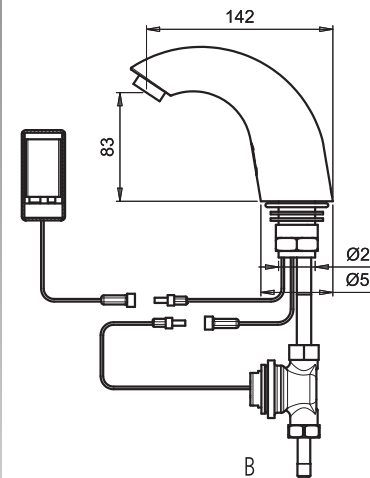
# TROUBLE SHOOTING

Problem	Indicator	Cause	Solution
No water comes out of the tap:	1. Sensor flashes continuously when user's hands are within the sensor's range. 2. Red light in the sensor does not flash when user's hands are within the sensor's range.	Low battery.	Replace battery.
		1. Range is too short. 2. Range is too long. 3. Battery is completely used up.	Increase the range. Decrease the range. The battery must be replaced.
		4. Unit is in "Security Mode". 5. Sensor is picking up reflections from mirror or other object.	Eliminate cause of reflection.
		1. Connectors between the electronic unit and solenoid are disconnected.	Connect the electronic unit connectors to the solenoid.
		2. Debris or scale in solenoid.	Unscrew solenoid, pull out the plunger and the spring from the solenoid and clean them. Use scale remover material if needed. When replacing the plunger, please make sure that the spring is in vertical position.
Water flow from spout does not stop:	3. Red light in the sensor flashes when user's hands are within the sensor's range.	3. The central orifice in the diaphragm is plugged or the diaphragm is torn.	Clean the orifice or replace diaphragm.
		4. The water supply pressure is higher than 8 bar.	Reduce the water supply pressure.
		5. The water supply pressure is under 8 bars and yet the pressure in the faucet's body is higher. This situation could be caused by a sudden increase in the water supply pressure that the back-check prevents from dropping, even after water supply pressure drops under 8 bars.	Shut off water supply and unscrew one of the flexible pipes in order to reduce the pressure that blocks the product.
		Debris or scale in diaphragm or the diaphragm is torn.	Clean the orifice or replace diaphragm.
		1. Sensor is dirty or covered**.	Clean or eliminate case of interference.
Water flow diminished.		2. Sensor is picking up reflections from mirror or another object. Filter or aerator is clogged.	Decrease the range or eliminate cause of reflection. Remove, clean and reinstall.

# TECHNICAL DATA



EASY B - EASY E  
Electronic faucet for cold or premixed water



**Power Supply:**

**Security time:**

**Recommended water pressure:**

**Preset sensor range:**

**Minimum sensor range:**

**Maximum sensor range:**

**Security time:**

**Hot water temperature:**

9V battery or 9V transformer

Optional: 6 x 1.5 AA batteries

90 seconds. Can be reduced with the remote control.

0.5-8.0 bar (7-116 PSI)

With water pressure of more than 8 bars, use a pressure reducing valve for reduction.

220 mm Adjustable.

80 mm

300 mm

90 seconds

Max 70° C

## RANGE ADJUSTMENT / BATTERY REPLACEMENT INSTRUCTIONS

### Adjusting the sensor with a remote control - optional:

In order to adjust the sensor with a Remote Control hold the Remote Control straight in front of the sensor in a distance of about 4" (10cm). Choose the function you want to adjust by pressing once on one of the function buttons. After pressing once on a specific function button, a quick flashing of the red light in front of the sensor will occur.

At this stage, you can change the adjustment by pressing the (-) or (+) buttons, every push will increase or decrease one level.

**Range:** Press + to increase detection range and - to decrease the detection range of the sensor.

The remote control can also be used to adjust:

**Flow time (Security time):** Press + to increase the security time and - to decrease it.

**Delay In:** Changes the time the water will start flowing when the user's hands are within the sensor range. Press + to increase it and - to decrease it.

**Delay Out:** Changes the time of water flow after the user's hands are removed. Press + to increase it and - to decrease it.

**On/Off:** Press this function button and the faucet will remain off for 1 minute. To cancel this function press the on/off again.

**Reset:** This function allows coming back to all the factory settings. Press the Reset button and without releasing it, press one time the + button.



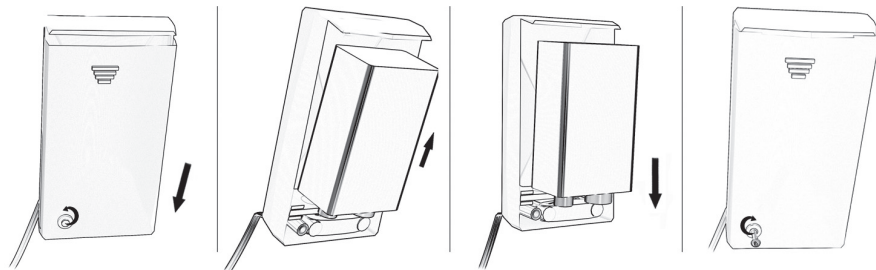
### BATTERY REPLACEMENT INSTRUCTIONS – Easy B model only

When the battery weakens, the red indicator light will blink at a constant rate.

The battery must be replaced within two weeks.

To replace the battery follow these instructions:

1. Carefully open the battery box and remove the old battery.
2. Replace the used battery with a new 9V battery (Lithium battery is recommended).
3. Close the box.



6

## P R E - I N S T A L L A T I O N I N F O R M A T I O N

### Check contents

Separate all parts from the packaging and check each part with the "Pack contents" section. Pay attention to the different models variations.

Make sure all parts are accounted for before discarding any packaging material.

If any parts are missing, do not attempt to install your Easy electronic faucet until you obtain the missing parts.

### Warnings

Do not install the faucet facing a mirror or any other electronic system operated by an infrared sensor.

To prevent reflection problems, it is recommended to keep a minimum distance of 1.50 meters between the faucet and other objects.

### Preparation for installation

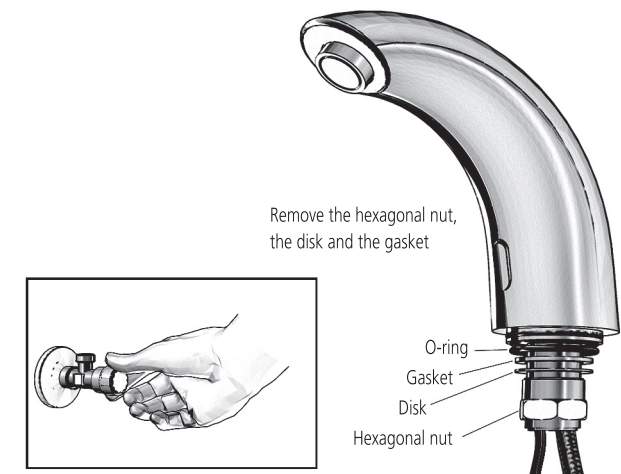
Flush water supply lines thoroughly before installing the faucet. Do not allow dirt, Teflon tape or metal particles to enter the faucet.

Shut off water supply.

### Important

All plumbing is to be installed in accordance with applicable codes and regulations.

3



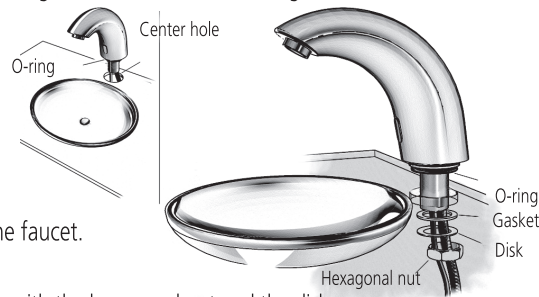
# F A U C E T I N S T A L L A T I O N

## Step 1 - Remove all mounting hardware

1. Shut off water supply and remove the hexagonal nut, the disk and the gasket. Do not remove the O-ring from the base of the faucet.

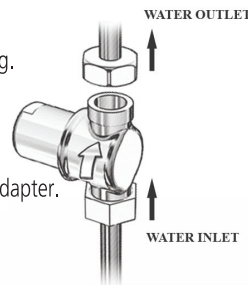
## Step 2 - Installing the faucet

1. Place the faucet with O-ring into the hole in the deck or lavatory. Make sure the O-ring is located between the deck or lavatory and the bottom of the faucet.
2. Slide the gasket over the flexible hose.
3. Secure the faucet to the deck or lavatory with the hexagonal nut and the disk.



## Step 3 - Connecting the water supply

1. Fit the flexible pipe coming from the Easy base to the solenoid valve housing.
  2. Fit the water supply inlet to the adapter at the solenoid valve housing.
- Important:** inlet and outlet should follow the indicating arrow at the solenoid housing.
- Note:** make sure the filter is located between the solenoid housing and the adapter.
3. Turn on the central water supply and the shut-off valve. Check for leaks.



## Step 4 - Connecting the power source

1. Connect the water proof connector from the electronic unit to the solenoid's valve connector.
2. Connect the power source:
  - a. For Easy B: Connect the other water proof connector from the electronic unit to the battery box connector. Install the battery box at the wall under the sink using the two sided adhesive foam tape. The cable connection must point down. (You can use an optional extension cable in order to assemble the battery box up to 10 ft. away from the sink. See section "Spare parts")
  - b. For Easy E: Connect the other water proof connector from the electronic unit to the transformer connector. Plug the transformer into the electricity socket.
3. Important: After connecting the power source, wait a few seconds before activating the faucet to avoid entering into "adjusting mode". Activate the faucet.
4. If the range is unsatisfactory, refer to the section entitled "Range adjustment"



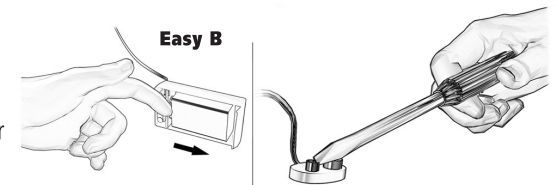
# R A N G E A D J U S T M E N T

The sensor range is the range an object can be away from the sensor in order to activate the faucet. The sensor is factory preset. If necessary, it can be adjusted as follows:

## Adjusting the sensor range:

1. Disconnect the power supply, battery or transformer, from the sensor.
2. Make a short circuit between the (+) and the (-) of the sensor. You can use a screw driver or another conductor material to make this short circuit. Alternatively, after disconnecting the power supply, activate the sensor three or four times.

**Easy E** Disconnect power supply

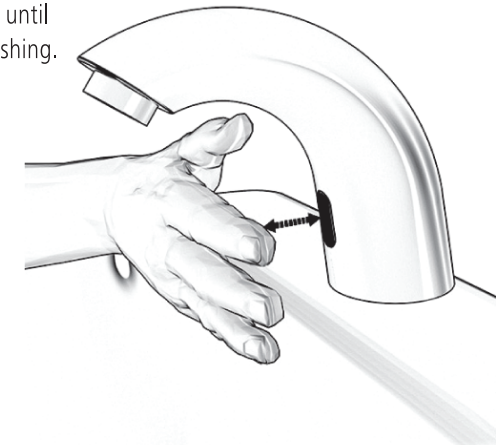


**Easy B**

**Do not make a short circuit on the power supply or on the sensor when the power supply is connected to the sensor.**

3. Reconnect the power supply to the sensor.
4. To enter the adjusting mode, put your hand in front of the sensor at a distance of 2" (5cm) to 4" (10cm) within 5 seconds from the reconnection of the power supply.
 

**Note:** If you will not put your hand in front of the sensor after connecting the power supply, the sensor will not enter adjusting mode and the previous adjustment will return.
5. When the sensor enters adjusting mode and your hand is in front of the sensor, a slow flashing of the red light in front of the sensor will occur.
6. Keep your hand in front of the sensor until the slow flashing changes to quick flashing. At this point, move your hand to the required distance from the sensor and wait until the red light will stop flashing.
7. When the red light has turned off, the sensor is adjusted to the required distance.
8. Check the distance you have set and if it is not satisfactory, follow steps 1-6.

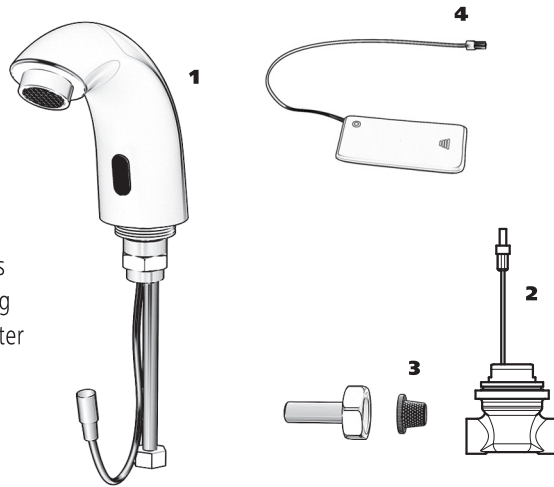


# P A C K C O N T E N T S

Familiarize yourself with the part names and confirm that the parts are included.

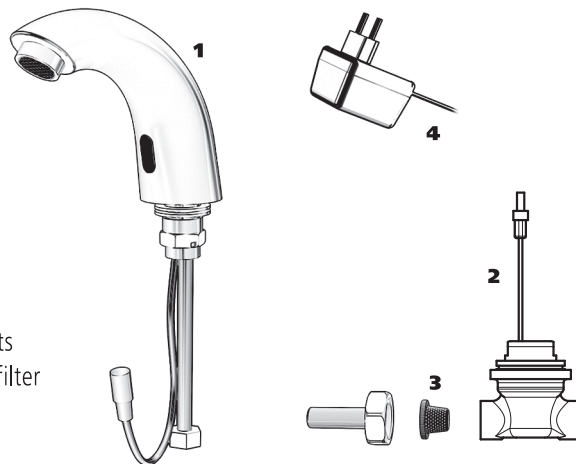
## 1. Easy B

1. 1x Tap and attachments
2. 1x Solenoid and housing
3. 1x Filter and filter adapter
4. 1x Battery box



## 2. Easy E

1. 1x Tap and attachments
2. 1x Solenoid, housing, filter and filter adapter
3. 1x Transformer



# M A I N T E N A N C E / S P A R E P A R T S

## Filter cleaning instructions

This mixer is provided with a stainless steel filter preventing foreign particles to enter the lines. If the water flow has decreased, this may be because the filter is clogged. The filter can be cleaned as follows:

1. Shut-off the water shut off valve (angle valve).
2. Disconnect the integrated unit from the shut off valve (angle valve) and disassemble the filter adapter from it.
3. Remove the filter and wash it under running water.
4. Reassemble the parts.
5. Reconnect the integrated unit and restore the incoming water supply.
6. Make sure that there is no water leakage.

## Care and cleaning of chrome and special finishes

DO NOT use steel wool or cleansing agents containing alcohol, acid, abrasives, or the like. Use of any prohibited cleaning or maintenance products or substances could damage the surface of the faucet. For surface cleaning of faucet use **ONLY** soap and water, then wipe dry with clean cloth or towel. When cleaning bathroom tile, the faucets should be protected from any splattering of harsh cleansers.

## Spare parts list

- |                        |                  |
|------------------------|------------------|
| 1. Sensor kit          | Cat.No. 07220007 |
| 2. Solenoid valve kit  | Cat.No. 07230003 |
| 3. Filter              | Cat.No. 08530011 |
| 4. Battery box         | Cat.No. 06530008 |
| 5. 9V Lithium battery  | Cat.No. 06511002 |
| 6. 9V Alkaline battery | Cat.No. 06511001 |
| 7. Transformer         | Cat.No. 06522028 |

## Optional accessories

- |                                     |                  |
|-------------------------------------|------------------|
| 8. Remote control                   | Cat.No. 07100001 |
| 9. IP67 Batteries box               | Cat.No. 06530020 |
| 10. Transformer junction box        | Cat.No. 06530021 |
| 11. Mixing valve                    | Cat.No. 200060   |
| 12. Extension cable (B models only) | Cat.No. 06009015 |

# I N d E X

1	TECHNICAL DATA
2	PACK CONTENTS Easy B Easy E
3	PRE-INSTALLATION INFORMATION
4	FAUCET INSTALLATION
5-6	RANGE ADJUSTMENT Adjusting the sensor range Adjusting the sensor range with a remote control - optional
6	BATTERY REPLACEMENT INSTRUCTIONS To replace the battery at Easy B
7	MAINTENANCE Filter cleaning instructions Care and cleaning of chrome and special finishes
7	SPARE PARTS
8	TROUBLE SHOOTING
9	WARRANTY

# W A R R A N T Y

## L I M I T E D W A R R A N T Y

This product is covered by a limited warranty of two years from date of purchase.

During this period, STERN undertakes, at its option, to repair or replace any faults caused by defective materials or manufacturer defaults that may arise (see Stern Warranty).

The guarantee does not cover faults or damage caused by incorrect installation and/or maintenance, wear and tear, battery, or water composition. This includes, but is not limited to the following:

- Incorrect installation, inversions of supply pipes.
- Pressures or temperatures exceeding recommended limits.
- Improper manipulation, tampering, bad or lapsed maintenance.
- Foreign bodies, dirt or scale introduced by the water supply.

\* "Security Mode": If the sensor is covered for more than 90 sec. the faucet will automatically shut off water flow. To return to normal operation remove any blockage.

\*\* Water flow will stop after 90 seconds because of the security time.