

INSTALLATION AND MAINTENANCE GUIDE

JUPITER 1032

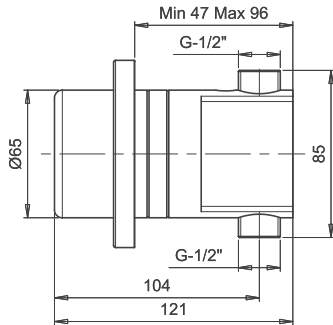


ELECTRONIC FLUSH VALVE FOR URINAL

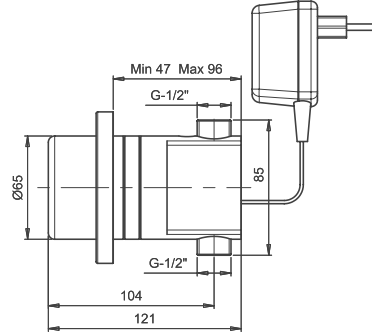
INDEX

- 1** TECHNICAL DATA
- 2** PACK CONTENTS
- 3** PRE-INSTALLATION INFORMATION
- 4** INSTALLATION
- 5-8** SETTINGS ADJUSTMENT
- 9** BATTERY REPLACEMENT INSTRUCTIONS
- 10** MAINTENANCE
 - Filter cleaning instructions
 - Care and cleaning of chrome and special finishes
- 11** SPARE PARTS LIST
- 12** LIMITED WARRANTY
- 13** SERVICE CHECK LIST

TECHNICAL DATA



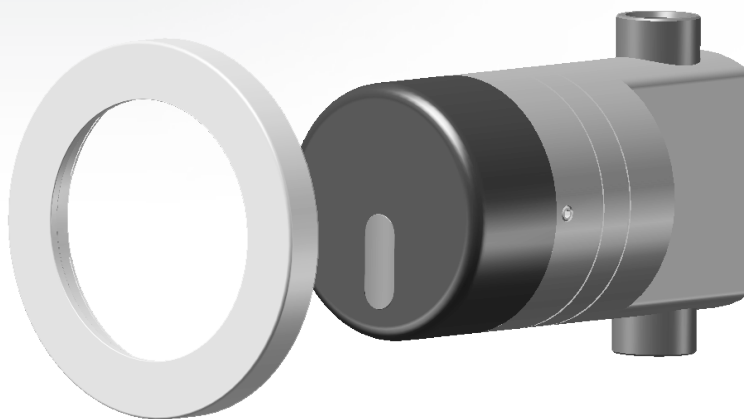
JUPITER 1032



JUPITER 1032 E

- Power supply:** Internally mounted 9V battery or 9V transformer
- Recommended water pressure:** 0.5-8.0 bar (7-116 PSI)
With water pressure of more than 8 bars, use a pressure reducing valve for reduction.
- Preset sensor range:** 600 mm Adjustable
- Minimum sensor range:** 300 mm
- Maximum sensor range:** 800 mm
- 24 Hours automatic flush** Maintains trap seal every 24 hours when not used
- Preset flushing time:** 6 seconds. Adjustable
- Prior use flush mode:** Optional feature

PACK CONTENTS

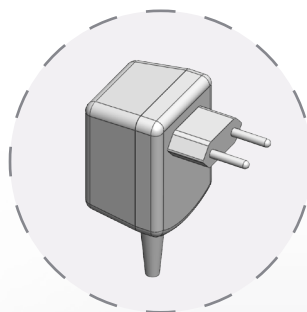


1x Cover plate

1x Electronic shower control
body and attachments



2x Allen keys 2 mm and 4 mm



1 x 9V Transformer (E version)

PRE-INSTALLATION INFORMATION

Check contents

Separate all parts from the packaging and check each part with the pack contents section.

Pay attention to the different models variations.

Make sure all parts are accounted for before discarding any Packaging material.

If any parts are missing, do not attempt to install your electronic flush valve until you obtain the missing parts.

Warnings

Do not install the flush valve facing a mirror or any other electronic system operated by an infrared sensor.

To prevent reflection problems, it is recommended to keep a minimum distance of 1.50 meters between the flush valve and other objects.

Preparation for installation

Flush water supply lines thoroughly before installing the flush valve. Do not allow dirt, Teflon tape or metal particles to enter the flush valve.

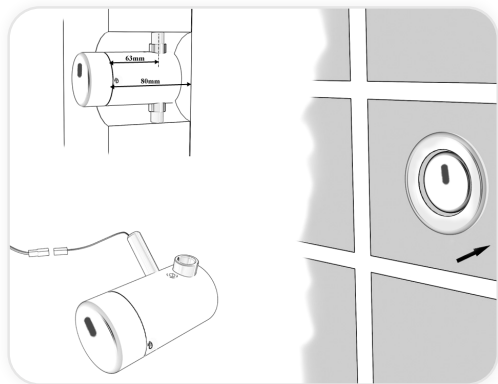
Shut off water supply.

Important

All plumbing is to be installed in accordance with applicable codes and regulations.

INSTALLATION

- 1) Shut off the water supply.
- 2) Cut an adequate opening in the wall for the dimensions of the product and if your model is Jupiter 1032 E for the electricity wires.
- 3) Insert the product through the wall opening and assemble the inlet to the water supply pipe in the wall.
- 4) Connect the flush valve outlet to the pipe leading to the urinal's inlet.
- 5) Mount the flush valve body to the wall so it will protrude from the wall as shown in the drawing.
- 6) If your model is Jupiter 1032 E place the transformer near the electricity plug (up to 3 meters from the flush valve body) and connect the transformer wire to the flush valve body through the hole.
- 7) Turn on the water supply and check for leaks.
- 8) After the ceramic tiles are installed, assemble the cover plate over the flush valve body on the wall.
- 9) To operate the system stand a few second in front of the sensor. The Jupiter 1032 will flush automatically when you leave the urinal.
- 10) If the range is unsatisfactory, refer to the section titled "Range adjustment".



SETTINGS ADJUSTMENT WITH REMOTE CONTROL



Adjusting the settings with the remote control

If necessary, the sensor settings can be adjusted as following:

Shut off the water supply. In order to adjust the sensor with the remote control, hold the remote control straight in front of the sensor in a distance of about 6-8" (15-20cm). Choose the function you want to adjust by pressing once on one of the function buttons. After pressing once on a specific function button, a quick flashing of the red light at the front of the sensor will occur. At this stage, you can change the setting by pressing the (+) or the (-) buttons, every push will increase or decrease one level. After finishing the adjustment, turn the water supply back on.

SETTINGS ADJUSTMENT WITH REMOTE CONTROL



DETECTION RANGE: The sensor range is the greatest distance that an object can be away from the sensor to activate the flush valve. The sensor is factory preset.

To adjust the sensor range press + to increase detection range and – to decrease the detection range of the sensor.



DELAY IN TIME: It is recommended to change the delay in time for flush valves for urinals or toilets only.

If required, the delay in time can be modified also in flush valves as follows:

Press the IN button. Wait until a quick flashing of the red light of the sensor eye is perceived. Then, press + to increase the delay in time and – to reduce it.



DELAY OUT TIME: This button allows modifying the water flow time after the user removes his hands from the flush valve. A delay out time close to 0 will save more water. An increased delay out time will make the user experience more comfortable.

If required, the delay out time can be modified as follows:

Press the OUT button. Wait until a quick flashing of the red light of the sensor eye is perceived. Then, press + to increase the delay out time and – to reduce it.



24 HOUR HYGIENE FLUSH: If you have a compatible model with a 24 hours hygiene flush it is possible to enable and disable it .

To activate the hygiene flush, press the clock button. Wait until a quick flashing of the red light of the sensor eye is perceived. Then press + to activate the hygiene flush or – to deactivate it.



LOCK OUT TIME: It is possible to program a lock out time in Stern products upon request. This lock out time allows a user to activate the flush valve, only after a specific amount of time has passed.

If a specific lock out time was preset in a Stern product as default, and you would like to deactivate it, press the lock button. Wait until a quick flashing of the red light of the sensor eye is perceived. Then press + to activate the lock out time or – to deactivate it.

To activate it again, press the lock button and without releasing it, press the + button once.

SETTINGS ADJUSTMENT WITH REMOTE CONTROL



TEMPORARY OFF FUNCTION: This function is ideal to perform any kind of activity in front of the sensor without operating the system (for example, cleaning).

Faucets will remain shut for 1 minute when this button is pressed once. To cancel this function and to return to normal operation press the On/Off button again or wait 1 minute.



RESET BUTTON: This function allows the sensor to return to the original factory preset settings.

If required, press the Reset button and without releasing it, press the + button once.

MANUAL SETTINGS ADJUSTMENT

Adjusting the sensor range without a remote control:

1. Disconnect the power supply, battery or transformer, from the sensor.
2. Activate the sensor three or four times.
3. Reconnect the power supply to the sensor.
4. To enter into the adjusting mode, put your hand in front of the sensor at a distance of 2"(5cm) to 4"(10cm) within 5 seconds after the reconnection of the power supply.

Note: If you will not put your hand in front of the sensor after connecting the power supply, the sensor will not enter into adjusting mode and the previous setting will return.

5. When the sensor enters into the adjusting mode and your hand is in front of the sensor, a slow flashing of the red light at the front of the sensor will occur.
6. Keep your hand at the front of the sensor until the slow flashing changes into quick flashing. At this point, move your hand to the required distance from the sensor and wait until the red light will stop flashing.
7. When the red light has turned off, the sensor has been adjusted to the required distance.
8. Check the distance you have set and if it is not satisfactory, repeat steps 1-6.

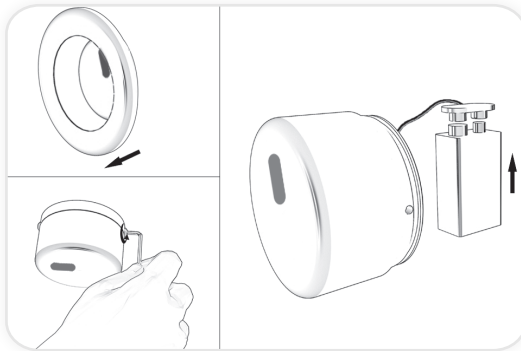
BATTERY REPLACEMENT

Battery models only

When the battery weakens, the red indicator light will blink at a constant rate when the user's hands are within the sensor range. The battery must be replaced within two weeks.

To replace the battery at battery models:

- 1) Pull out the cover plate. Release the screw with the Allen key and carefully pull it out.
- 2) Replace the used battery with a new 9V battery (Lithium battery is recommended).



3) Before reassembling the cap, make sure that the external O-ring is not damaged. Replace it if necessary.

4) Reassemble the cover plate with the electronic cap.

Attention: The interior of the flush valve body and the cover plate must be fully dry before reassembling the parts. If it is not fully dry, carefully dry it.

5) Connect the solenoid valve

connector to the electronic unit connector.

6) Assemble the cap.

7) Tighten the screw.

NOTE: In order to avoid entering the adjusting mode, wait 10 seconds after the connection of the new battery before you will operate the system.

Important: Spent batteries should not be disposed of with normal household waste. Contact your local authority for information on waste disposal and recycling.



MAINTENANCE

Filter cleaning instructions

This flush valve is provided with one / two stainless steel filter(s) preventing foreign particles to enter the lines. If the water flow has decreased, this can be because the filter(s) is/are clogged. The filter(s) can be cleaned as follows:

1. Shut-off the water shut off valve (angle valve).
2. Disconnect the flexible pipe/s.
3. Remove the filter(s) and wash it/them under running water.
4. Reassemble the parts.
5. Make sure that there is no water leakage.

Care and cleaning of chrome and special finishes

DO NOT use steel wool or cleansing agents containing alcohol, acid, abrasives, or the like. Use of any prohibited cleaning or maintenance products or substances could damage the surface of the flush valve. For surface cleaning of flush valve use **ONLY** soap and water, then wipe dry with clean cloth or towel. When cleaning bathroom tile, the flush valves should be protected from any splattering of harsh cleansers.

SPARE PARTS LIST

Seals and Screws Kit	07210008
Cover Kit	07270005
Sensor Kit	07220018
Filter Stop Valve Kit	07212002
Solenoid Valve Kit	07230002
Cover plate kit	07260010
Transformer	06522042

LIMITED WARRANTY

The manufacturer warrants that its electronic flush valves, flush valves and controls will be free of defects in material and workmanship during normal use for two years from the date the product is purchased.

If a defect is found in normal use, the manufacturer will, at its discretion, repair, provide a replacement part or product, or make appropriate adjustments. Damage caused by accident, misuse, or abuse is not covered by this warranty. Improper care and cleaning will void the warranty. Proof of purchase (original sales receipt) must be provided to The manufacturer with all warranty claims.

The manufacturer is not responsible for labor charges, installation, or other incidental or consequential costs other than those noted above. In no event shall the liability of the manufacturer exceed the purchase price of the flush valve, valve or control.

If you believe that you have a warranty claim, contact your Distributor, Dealer or Plumbing Contractor. Please be sure to provide all pertinent information regarding your claim, including a complete description of the problem, the product, model number, the date the product was purchased, from whom the product was purchased and the installation date. Also include your original invoice.

THE MANUFACTURER AND/OR SELLER DISCLAIM ANY LIABILITY FOR SPECIAL, INCIDENTAL OR CONSEQUENTIAL DAMAGES. This warranty excludes product damage due to installation error, incorrect maintenance, wear and tear, battery, water composition, product abuse, or product misuse, whether performed by a contractor, service company, or the consumer. This warranty does not cover product damage caused by the following:

- Incorrect installation, inversions of supply pipes.
- Pressures or temperatures exceeding recommended limits.
- Improper manipulation, tampering, bad or lapsed maintenance.
- Foreign bodies, dirt or scale introduced by the water supply

TROUBLE SHOOTING

PROBLEM	INDICATOR	CAUSE	SOLUTION
No water coming out of the flush valve:	1. Sensor flashes continuously when user's hands are within the sensor's range.	Low battery.	Replace battery.
	2. Red light in the sensor does not flash once when user's hands are within the sensor's range.	1. Range is too short.	Increase the range.
		2. Range is too long.	Decrease the range.
	3. Red light in the sensor flashes once when user's hands are within the sensor's range.	3. Battery is completely used up	The battery must be replaced.
		4. Unit is in "Security Mode"*	
		5. Sensor is picking up reflections from the washbasin or another object.	Eliminate cause of reflection.
1. Connectors between the electronic unit and solenoid are disconnected.		Connect the electronic unit connectors to the solenoid.	
2. Debris or scale in solenoid.		Unscrew solenoid, pull out the plunger and the spring from the solenoid and clean them. Use scale remover material if needed. When replacing the plunger, please make sure that the spring is in vertical position.	
Water flow from spout does not stop:	1. Sensor flashes once when user's hands are within the sensor's range.	3. The central orifice in the diaphragm is plugged or the diaphragm is torn	Clean the orifice or replace diaphragm.
		4. The water supply pressure is higher than 8 bar.	Reduce the supply water pressure.
		5. The water supply pressure is under 8 bars and yet the pressure in the flush valve's body is higher. This situation could be caused by a sudden increase in the water supply pressure that the backcheck prevents from dropping, even after water supply pressure drops under 8 bars.	Shut off water supply and unscrew one of the flexible pipes in order to reduce the pressure that blocks the product.
		2. Sensor is dirty or covered.**	Clean or eliminate cause of interference.
Water flow diminished	2. Red light in the sensor does not flash once when user's hands are within the sensor's range.	1. Sensor is dirty or covered.**	1. Decrease the range or eliminate cause of reflection.
		2. Sensor is picking up reflections from the washbasin or another object.	
		Filter or aerator is clogged	Remove, clean, re-install

* "Security Mode": If the sensor is covered for more than 90 sec. the flush valve will automatically shut off water flow. To return to normal operation remove any blockage.

** In this case, the water flow will stop anyway after 90 seconds because of the security time.



015134510 05.12