



15 GAN RAVE Blvd.

81222 GAN RAVE

YAVNE, ISRAEL

TEL: 972-8-9326000

FAX: 972-8-9326025

E - M A I L :

EXPORT@STERNAUCETS.COM

WWW.STERNAUCETS.COM



JUPITER 2030&2030E
ELECTRONIC FLUSH VALVE FOR URINALS

INSTALLATION & MAINTENANCE guide

JUPITER 2030



JUPITER 2030E



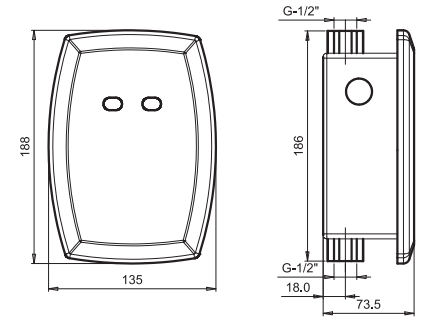
TROUBLE SHOOTING

Problem	Indicator	Cause	Solution
Valve does not flush:	1. Sensor flashes continuously when user's steps within the sensor's range. 2. Red light in the sensor does not flash when user's steps within the sensor's range.	Low battery.	Replace battery.
		1. Range is too short. 2. Range is too long. 3. Battery is completely used up.	Increase the range. Decrease the range. The battery must be replaced.
		4. Sensor is picking up reflections from mirror or other object.	Eliminate cause of reflection.
	3. Red light in the sensor flashes when user's steps are within the sensor's range.	1. Connectors between the electronic unit and solenoid are disconnected.	Connect the electronic unit connectors to the solenoid.
		2. Debris or scale in solenoid.	Unscrew solenoid, pull out the plunger and the spring from solenoid. Clean them with pressure or use scale remover material if needed.
		3. The central orifice in the diaphragm is plugged or the diaphragm is torn. 4. The water supply pressure is higher than 8 bar.	Clean the orifice or replace diaphragm. Reduce the water supply pressure.
Valve does not shut off:	1. Sensor flashes when user's steps within the sensor's range. 2. Red light in the sensor does not flash when user's steps within the sensor's range.	Debris or scale in diaphragm or the diaphragm is torn.	Clean the orifice or replace diaphragm.
		1. Sensor is dirty or covered.	Clean or eliminate cause of interference.
	2. Sensor is picking up reflections from mirror or another object.	Decrease the range or eliminate cause of reflection.	

TECHNICAL DATA



JUPITER 2030 - JUPITER 2030 E
Electronic flush valve for urinals



Power Supply:

Operating Water Pressure:

24 hour Automatic Flush:

Sensor Range:

Flushing Time:

Prior use Flush Mode:

9V battery or 9V transformer.

0.3-8.0 bar (4.0-116 PSI).

24 hours automatic flush when not used. to improved hygiene.

55 cm Factory set. Adjustable manually or with a remote control.

6 secs. Factory set. Adjustable: 3 to 20 secs.

Optional feature.

RANGE ADJUSTMENT / BATTERY REPLACEMENT INSTRUCTIONS

Adjusting the sensor with a remote control - optional:

Hold the remote control straight in front of the sensor in a distance of about 4" (10cm). Select the function you want to adjust by pressing the function button once. The red light at the front of the sensor will start flashing quickly. You can now make the adjustment by pressing the (-) or (+) buttons. Every press will increase or decrease one increment of adjustment.

Range: Press + to increase the detection range and – to decrease the detection range of the sensor.

The remote control may also be used to adjust:

Flow Time: Determines the water flushing time once the user leaves the urinal. Press + to increase the flushing time and – to decrease it.

Delay In: This function prevents unwanted activation due to a person passing without using the urinal. The sensor will only be activated if the user is detected for the preset amount of time. Press (+) to increase and (-) to decrease the time.

Delay Out: This function allows the delay time before the flush, after the user leaves the urinal, to be modified. Press (+) to increase and (-) to decrease the time.

On/Off: This makes cleaning the urinal easier without activating the system. Pressing the button once will prevent the solenoid from opening for one minute. To cancel this function press the on/off button again.

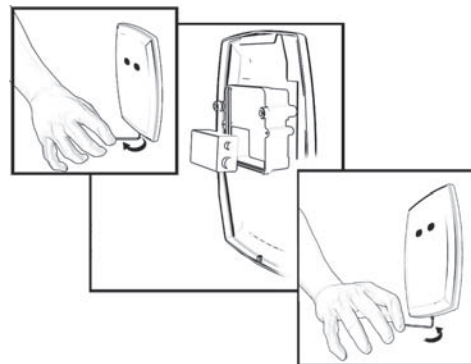
Reset: This function allows coming back to all the factory settings. Press the Reset button and without releasing it, press one time the + button.

Battery replacement instructions - Battery model only

When the battery weakens, the red indicator light will blink at a constant rate. The battery must be replaced within two weeks.

To replace the battery :

1. Release the screw at the bottom of the cover plate and remove the cover plate.
2. Release the screws and the protective transparent cover of the battery housing from the sensor unit.
3. Replace the used battery with a new 9V battery (Lithium battery is recommended).
4. Refit the protective cover and then the wall cover plate.



P R E - I N S T A L L A T I O N I N F O R M A T I O N

Check contents

Separate all parts from the packaging and check each part with the pack contents section.

Pay attention to the different models variations.

Make sure all parts are accounted for before discarding any packaging material.

If any parts are missing, do not attempt to install your Jupiter 2030 electronic flush valve until you obtain the missing parts.

Warnings

Do not install the system facing a mirror or any other electronic system operated by an infra-red sensor.

To prevent reflection problems, it is recommended to keep a minimum distance of 1.50 meters between the flush valve and other objects.

Preparation for installation

Flush the water supply lines thoroughly before installing the flush valve. Do not allow dirt, Teflon tape or metal particles to enter it.

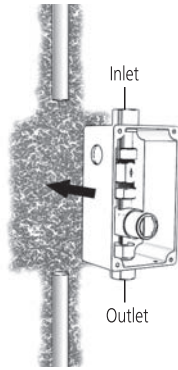
Shut off the water supply.

Important

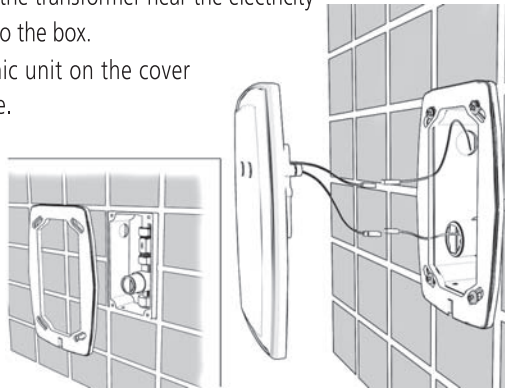
All plumbing is to be installed in accordance with applicable codes and regulations.

I N S T A L L A T I O N

1. Shut off the water supply.
2. Cut an adequate opening into the wall to accommodate the dimensions of the box.
3. Insert the electronic flush valve's box through the wall.
4. Connect the flush valve inlet to the water supply.
5. Connect the flush valve outlet nipple to the pipe leading to the urinal's inlet.
6. Refit the temporary protective cover to protect the flush valve.
7. Once the electricity, plumbing and tiles works are finished, replace the temporary protective cover with the plastic seat. Adjust it using the four screws provided.



8. If your model is Jupiter 2030 E, place the transformer near the electricity plug and thread the transformer's wire to the box.
9. Connect the wire from the electronic unit on the cover plate to the solenoid of the flush valve.



10. Connect the other wire from the electronic unit to the power supply, either battery or transformer.

11. Turn on the water supply. Make sure that there is no water leakage.

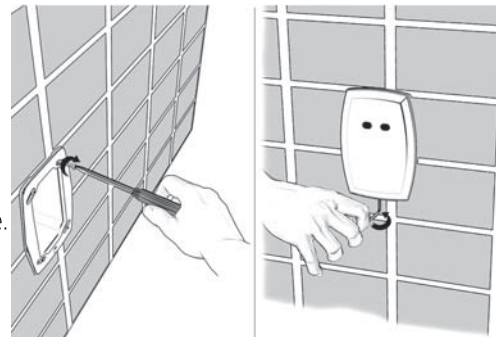
12. Assemble the wall cover panel to the cover seat and secure with the screw located at the bottom of the cover plate. If your model is Jupiter 2030 E, plug the transformer to the electricity supply.

Important: After connecting the power source, wait a few seconds before activating the flush valve to avoid entering into "adjusting mode".

13. Move away from the sensor to activate the flush valve. The valve will flush water seconds after your departure.

14. If needed adjust the flow capacity by turning the regulating valve.

15. If the range is unsatisfactory, refer to the section entitled "Range adjustment".



R A N G E A D J U S T M E N T

The sensor range is the greatest distance an object can be away from the sensor to activate the flush valve. The factory setting should be satisfactory for most installations. If the range is too short (i.e. not sensing users) or too long (i.e. sensing the opposite wall), it may be adjusted as follows:

Adjusting the sensor range without a remote control:

1. Disconnect the battery or switch off the electricity supply to the sensor.
2. For the Jupiter 2030 make a short circuit between the (+) and the (-) connections of the sensor. A screw driver can be used or any conductive material to make this short circuit. Alternatively and for the Jupiter 2030 E , after disconnecting the power supply, activate the sensor three or four times.

Do not make a short circuit on the power supply or on the sensor when the power supply is connected to the sensor.

3. Reconnect the power supply to the sensor.
4. To enter into the adjusting mode, put your hand in front of the sensor at a distance of 2" (5cm) within 5 seconds from the reconnection of the power supply.

Note: If you will not put your hand in front of the sensor after connecting the power supply, the sensor will not enter the adjusting mode and the previous adjustment will continue.

5. When the sensor enters the adjusting mode and your hand is in front of the sensor, the red light in front of the sensor will flash slowly.

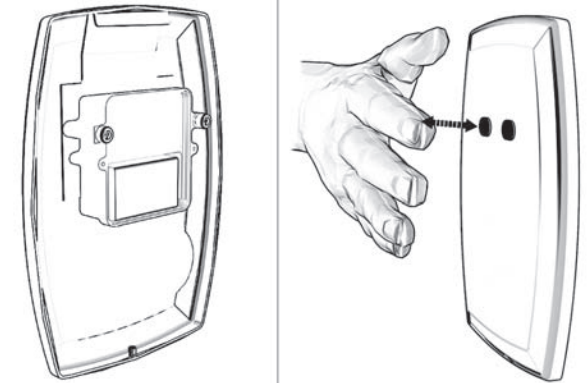
6. Keep your hand in front of the sensor until the slow flashing changes to quick flashing. At this point

move your hand to the required distance from the

sensor and wait until the red light will stop flashing.

7. When the red light has turned off, the sensor is adjusted to the required distance.

8. Check the distance you have set and if it is not satisfactory, repeat the procedure.

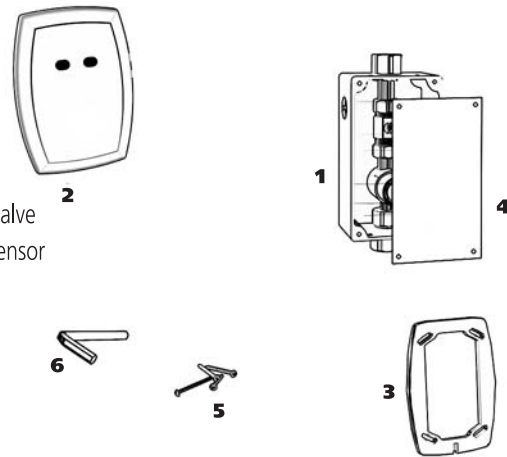


P A C K C O N T E N T S

Familiarize yourself with the parts names and confirm that the parts are included.

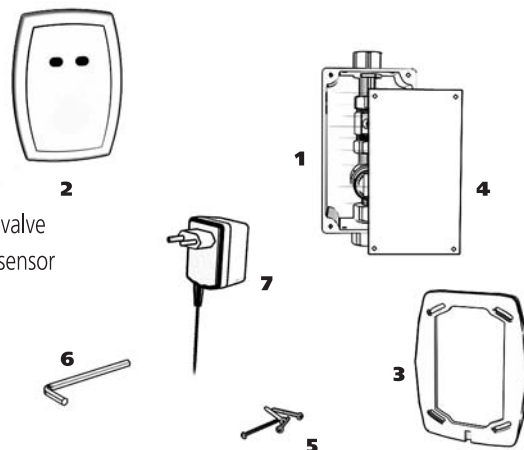
1. Jupiter 2030

1. 1x Plastic box with concealed flush valve
2. 1x Wall cover plate with electronic sensor
3. 1x Plastic seat for the cover plate
4. 1x Temporary protective cover
5. 4x Screws
6. 1x Allen key



2. Jupiter 2030 E

1. 1x Plastic box with concealed flush valve
2. 1x Wall cover plate with electronic sensor
3. 1x Plastic seat for the cover plate
4. 1x Temporary protective cover
5. 4x Screws
6. 1x Allen key
7. 1x Transformer



M A I N T E N A N C E

Filter cleaning instructions

This flush valve is provided with a stainless steel filter preventing foreign particles to enter the lines. If the water flow has decreased, this may be because the filter is clogged. The filter can be cleaned as follows:

1. Turn off the regulating valve.
2. Disassemble the solenoid valve by opening the nuts.
3. Remove the filter and wash it under running water.
4. Reassemble the filter.
5. Reassemble the solenoid valve.
6. Turn on the regulating valve and adjust the flow capacity.
7. Make sure that there is no water leakage.

Care and cleaning of chrome and special finishes

DO NOT use steel wool or cleansing agents containing alcohol, acid, abrasives, or the like. Use of any prohibited cleaning or maintenance products or substances could damage the surface of the flush valve. For surface cleaning use **ONLY** soap and water, then wipe dry with clean cloth or towel. When cleaning bathroom tile, the flush valve should be protected from any splattering of harsh cleansers.

I N d E X

3	TECHNICAL DATA
4	PACK CONTENTS Jupiter 2030 Jupiter 2030 E
5	PRE INSTALLATION INFORMATION
6	FAUCET INSTALLATION
7-8	RANGE ADJUSTMENT Adjusting the sensor range Adjusting the sensor range with a remote control - optional
8	BATTERY REPLACEMENT INSTRUCTIONS To replace the battery at Jupiter 2030
9	MAINTENANCE Filters cleaning instructions Care and cleaning of chrome and special finishes
9	SPARE PARTS LIST
10	TROUBLE-SHOOTING
11	LIMITED WARRANTY

W A R R A N T Y

L I M I T E D W A R R A N T Y

This product is covered by a limited warranty of two years from date of purchase.

During this period, STERN undertakes, at its option, to repair or replace any faults caused by defective materials or manufacturer defaults that may arise (see Stern Warranty).

The guarantee does not cover faults or damage caused by incorrect installation and/or maintenance, wear and tear, battery, or water composition. This includes, but is not limited to the following:

- Incorrect installation, inversions of supply pipes.
- Pressures or temperatures exceeding recommended limits.
- Improper manipulation, tampering, bad or lapsed maintenance.
- Foreign bodies, dirt or scale introduced by the water supply.